

STRONG FLEXIBLE



derma+flex® ™
TOPICAL SKIN ADHESIVE
High Viscosity, 2-Octyl Cyanoacrylate



How *derma+flex*[®] QS Works:

derma+flex[®] QS[™] is the perfect solution for the topical closure of surgical incisions and minor traumatic incidents.

Our formula self activates upon contact with skin after application. Once applied to the wound, *derma+flex*[®] QS[™] quickly polymerises in reaction to the chemistry of the skin, creating a strong-but-flexible microbial barrier.

Applied topically over a wound or incision, *derma+flex*[®] QS[™] creates a bond which bridges the edges forming a strong, flexible seal. *derma+flex*[®] QS[™] cures to form a waterproof, flexible film which will stay on the skin for up to 10 days, protecting the wound or incision from external dirt and bacteria.

Easily approximated wounds from surgical incisions such as:*

- | | |
|-----------------------------------|--------------------------|
| + Nephrectomy | + Abdominal surgery |
| + Thyroidectomy | + Urology procedures |
| + Laparoscopic procedures | + Hepatectomy |
| + Partial mastectomy / mastectomy | + C-section |
| + Colorectal surgery | + Orthopaedic procedures |

**derma+flex[®] QS[™] may be used in conjunction with, but not in place of, deep dermal sutures.*

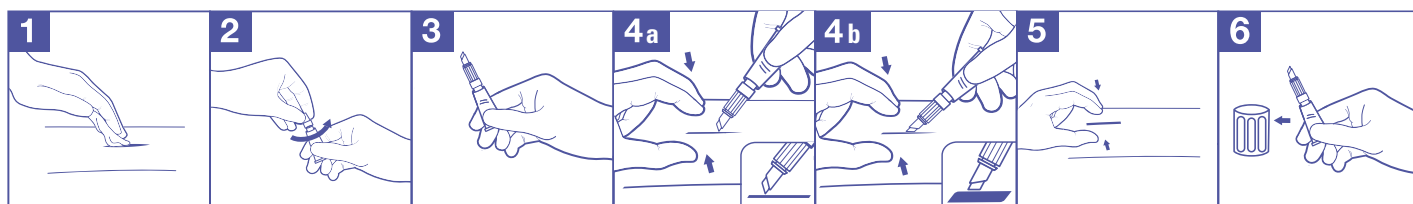
How to Use *derma+flex*[®] QS[™]

- 1 Twist the tip until it pierces the tube.
- 2 Squeeze the tube to prime the applicator until the violet-dyed adhesive colours the tip.
- 3 Approximate the wound edges and thinly spread the adhesive over the wound site. Hold the approximated wound edges together for 60 seconds to allow the adhesive to cure.
- 4 Take care not to apply the adhesive too thickly (no violet colour should be visible) as this will increase the cure time.
- 5 Hold the approximated wound edges together for 60 seconds to allow the adhesive to cure.

derma+flex® QS™ 2-Octyl formulation means that it is perfectly engineered for OR & A&E

derma+flex® QS™ is also fast-setting and easy to apply. Our adhesive features a gel-like consistency that won't drip, run, or seep into wounds.

derma+flex® QS™ is supplied with a soft, angled tip which can be tilted to address all types of wound. Either precise, narrow lines or wide flat equal coverage for larger areas.



PRODUCT BENEFITS



FOR MEDICAL STAFF:

- + Creates a Microbial Barrier
- + Easy to Apply
- + Highly Flexible
- + Suture & Staple Compatible
- + Sets within 60 Seconds

FOR THE PATIENT:

- + Waterproof, Shower-Friendly Formula
- + Painless Application
- + No Suture Removal
- + Minimal Exothermic Effect
- + Cosmetically Appealing

FOR THE HOSPITAL:

- + Faster Wound Closure
- + Lower Cost
- + A&E Friendly
- + No Sharps Risk
- + Room Temperature Storage (No Refrigeration Required)
- + Safe & Reliable



OPEN WOUND

Wound has been cleaned and haemostasis achieved



TREATED WOUND

The wound edges have been approximated and derma+flex® QS™ applied to the closed wound



HEALED WOUND

3 months later, the healed wound is virtually invisible



BENEFITS FOR MEDICAL STAFF

derma+flex[®] *QS*[™] will perfectly address both Operating theater and A&E requirements. The 2-octyl formulation sets rapidly with virtually no exothermic effect for a strong, highly flexible seal in under 60 seconds.

We Have Medical Professionals in Mind

Every aspect of our product and packaging has been designed to simplify application in the Operating Theatre or A&E environments. *derma+flex*[®] *QS*[™] features

+ INTUITIVE AND SAFE APPLICATION

Our packaging promotes intuitive, safe, and precise handling. The soft, angled applicator tip will cater to different wound types and allow for multiple applications on a single patient. The lack of a glass vial in the packaging prevents medical professionals and patients from sharps related injuries.

+ GREATER STRENGTH

The chemical characteristics of *derma+flex*[®] *QS*[™] ensure higher tensile strength than n-butyl or n-butyl blend based cyanoacrylate tissue adhesives.

+ HIGH VISCOSITY

derma+flex[®] *QS*[™] is more viscous than the majority of available tissue adhesives on the market. The gel-like consistency means our formula stays in place and won't seep into the wound.

+ SUTURE & STAPLE COMPATIBILITY

derma+flex[®] *QS*[™] is an ideal complement to sutures or staples. Apply deep dermal sutures or staples to close wounds and then cover the top of the wound with *derma+flex*[®] *QS*[™] to provide a waterproof microbial barrier.

+ HIGH FLEXIBILITY

As *derma+flex*[®] *QS*[™] is a pure 2-Octyl cyanoacrylate, it is more flexible and less prone to cracking than n-butyl based cyanoacrylate tissue adhesives. The result is a flexible film that better resists cracking and retains the skin bond for longer – lasting for up to 10 days.

+ FASTER HEALING

The formation of a strong, flexible and waterproof film sealing the wound promotes healing by shielding the wound from external dirt and bacteria and allows the patient to shower soon after application.

+ FASTER SETTING

The fast setting time of *derma+flex*[®] *QS*[™] ensures convenient handling and patients' comfort. The adhesive sets fast enough to prevent migration from the wound and to create a strong skin-like cover with just one application.





BENEFITS FOR THE PATIENT



We Have Patients in Mind

+ MICROBIAL BARRIER

Medical cyanoacrylate skin adhesives create a microbial barrier, sealing the wound*.

+ SHOWER-FRIENDLY FORMULA

When treated with *derma+flex*® QS™, patients can shower soon after the wound closure procedure. This enhances overall patient satisfaction as their daily routines are not affected.

+ ELIMINATE EXTERNAL SUTURE REMOVAL

For many minor wounds, *derma+flex*® QS™ adhesive can spare patients the discomfort of suturing. *derma+flex*® QS™ adhesive increases patient convenience by eliminating the return visit for suture removal. The adhesive will naturally slough off as the wound heals.

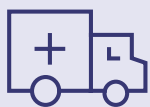
+ MINIMAL EXOTHERMIC EFFECT

derma+flex® QS™ is virtually free from the exothermic effect, meaning patients won't feel a temperature increase as the adhesive sets on the skin. This makes *derma+flex*® QS™ an optimal solution for the A&E environment, where wounds can be closed without anesthesia or the presence of a surgeon, even when dealing with the delicate skin of children.

+ COSMETICALLY APPEALING

With *derma+flex*® QS™, surgeons can close the edges of the wound evenly at its full length. The waterproof, flexible, crack free barrier created by *derma+flex*® QS™ remains intact for the entire healing time. no additional wounds or pressure points are created in the skin, which may result in a better cosmetic appearance.





BENEFITS FOR THE HOSPITAL

derma+flex[®] *QS*[™] is the topical skin adhesive of choice for hospitals worldwide due to its cost effectiveness, versatility and ease of use in both surgical and A&E environments.

We Have Hospitals in Mind

+ **FASTER WOUND CLOSURE**

It is estimated that wound closure procedures, performed with the use of topical skin adhesive rather than sutures, take on average 50-60% less time*.

+ **LOWER COST**

Faster wound closure procedures, reduced use of anaesthesia, fewer hospital staff involved per procedure and a lower percentage of post-operative complications. In addition, there is no need for the patient to re-visit the hospital for suture removal. All the above add up to savings for the hospital.

+ **A&E FRIENDLY**

Almost no exothermic effect combined with the surgical strength of the bond makes *derma+flex*[®] *QS*[™] fit for both operating theatre and A&E applications.

+ **NO GLASS IN PACKAGING**

Numerous competitive topical skin adhesives use glass vials, which need to be broken prior to the application of the adhesive to the skin. This form of packaging may become a sharps risk, as the glass shards can perforate protective gloves. In 2017 alone, 120 such cases were reported to regulatory authorities*.

+ **ROOM TEMPERATURE STORAGE**

In addition, unlike many competitive products, *derma+flex*[®] *QS*[™] can be stored in ambient temperature of up to 30° C, making refrigeration unnecessary.



Chemence Ltd.
13 Princewood Road, Corby
Northamptonshire, NN17 4XD, UK
+ 44 (0)1536 402600

Chemence Medical, Inc.
200 Technology Drive
Alpharetta, GA, 30005, USA
+1 844-633-4583

Chemence Sp. z o.o.
Ul. Aleja Jana Pawła II 22
00-133 Warszawa
+1 770-658-4302

chemencemedical.com
CMI_TF_DERMAFLEXQS_CE_062020